

# QUICK FACTS

## PERIODONTAL INSTRUMENTS

### XP TECHNOLOGY®

#### Advantages:

- No more sharpening
- Thinner Tips, better clinical outcomes
- Less fatigue
- Light-weight Resin Handles
- Available as standard and Quick Tip™
- Money saving:

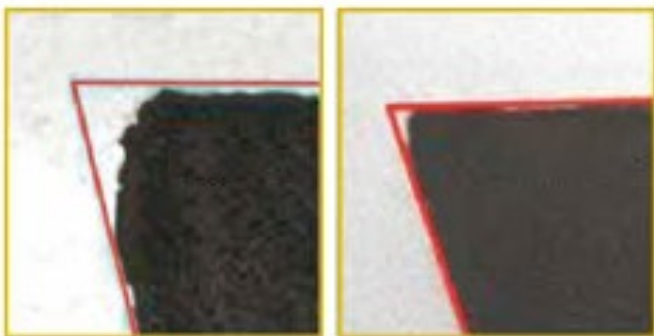
**How much are the possible savings for your office? Make the calculation!**

[Sharpening Calculator](#)

### American Eagle scaler and curettes two quality options

**XP Technology®  
Talon Tough™**

No more sharpening  
Value, possible to sharpen



**1.500 strokes**

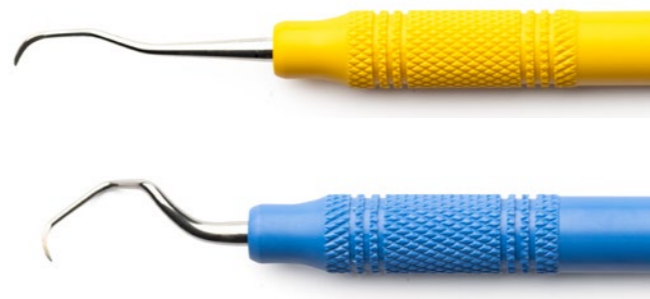
**15.000 strokes**

More information about [XP Technology](#)

## TALON TOUGH™

### Advantages:

- Special hardened Stainless steel
- Thin tips, long lasting
- Light Resin Handles
- Possible to sharpen.



More information about [Talon Tough](#)

## QUICK-TIP™ SYSTEM - just replace the used tip, not the whole instrument

### Advantages:

- Sustainable
- Money saving
- Hygienic
- Individual
- If reprocessed in the thermodesinfector – no need to unscrew every time



More information about [Quik-Tip](#)

## DIAGNOSTICS

### Advantages:

- Lightweight Resin handles that give excellent feedback
- Fine and flexible tips
- Many different options available



More information about [Diagnostics](#)

## SCALERS AND CURETTES

**AE SM0-00 X Morse Scaler.** Very fine scaler, perfectly suitable for very narrow spaces, around brackets and underneath wires



**AE SM23 XP X XP Technology® M23 Scaler**  
The best selling scaler – bending suitable for all mouth areas. Very thin tips for perfect access – possible due to XP Technology



**AE II B5-6 X Barnhart 5-6 Implant Curette**  
One example of our Implant Instruments

Universal bending, suitable in all mouth areas. Made of medical-grade Titanium and with less hardness than the actual implant material, to avoid scratches on the implant surface - due to the material softness it needs to be sharpened.



[Other scalers and curettes available for implants](#)

**AE DGMA XP X Double Gracey Mini Anterior XP**  
One Double Gracey that replaces Gracey 1/2, 5/6 and 7/8 of a regular Gracey Set. Both instrument sides are sharp, with the typical Gracey blade finishes. Mini version with 3mm longer shank, and 50% shorter blade.



**AEDGPXPQT + AEEQTHP + AEDGPBXPQT Double Gracey Posterior, as Quik-Tip Version, in XP with purple Resin Handle**



**AEQTW Quik-tip wrench** – to secure and fix the QT in the Handles

One instrument, that may be used mesial and distal. It replaces 11/12, 13/14 and 15/16 of a regular Gracey Curette Set. Also available as Anterior and in Mini Versions.



[Further information about Double Graceys](#)

## DIAGNOSTICS



**AE PUNC15RB X**  
**UNC 15 Probe University of North Carolina** 1-15mm markings, lightweight Resin handle for excellent feedback



**AE PN2B X**  
**Nabers Probe**  
 For Furcation Probing



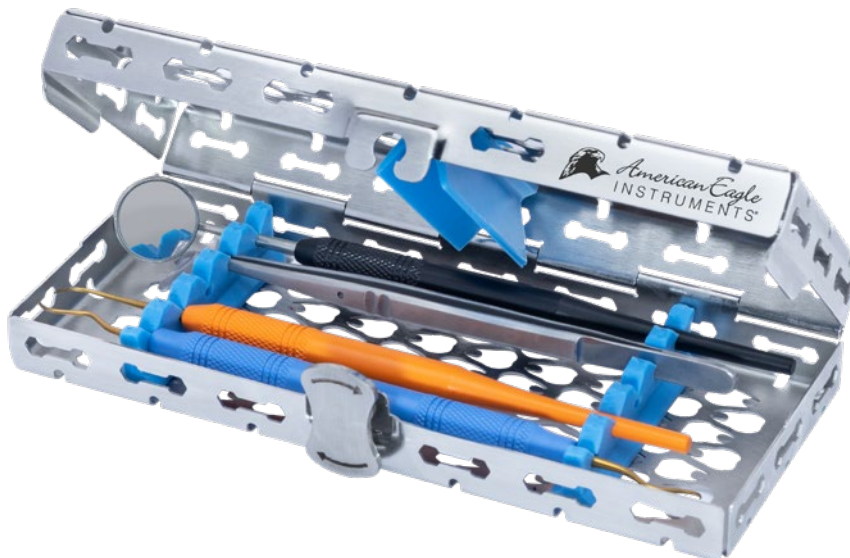
**AE EXP11-12 X**  
**Dental Hygienist Explorer #11-12 (Old Dominion)**  
 To detect calculus inside pockets – with the very thin tips and the lightweight handles, it allows excellent feedback. Also available as Deep Pocket version



**AE EXP9 X**  
**Explorer #9**  
 Most common Dental Explorer - The very thin tip and the lightweight handle allows excellent feedback.



**AE SCT 10**  
**London College tweezer**  
 Multi-purpose tweezer with guiding pin. Available with smooth or serrated handle (AESCT5)



**AEC1/4DIN**  
 Cassette for 5 instruments, ¼ DIN

Typically for 5 Instruments and extendable for up to 10 Instruments (for AE Scalers and Curettes and Diagnostics) with 1x retention Rail

[Further information about sizes and possibilities](#)

## GENERAL INFORMATION

Website

Downloads

Videos